

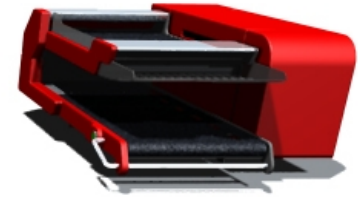
# d-lab.1 – assemble possibilities



2. PM cabinet  
2.000 Euro



Scanner  
4.000 Euro



**sorter 6"**  
**capacity**  
**upgrade 900**  
**prints / h**  
**2.000 Euro**



Film processing  
3.000 Euro



Netlab.1 incl. Software



**sorter 8"**  
**capacity**  
**upgrade 1.100**  
**prints / h**  
**1.000 Euro**

# netlab.1



Netlab.1 incl. Software

calculation

Netlab.1  
software

**Total**

**26.900 Euro**

# Netlab.1 plus



sorter 8"  
capacity upgrade 1.100 prints / h

calculation

Netlab.1  
software  
2. PM cabinet  
Sorter / Upgr.

**Total**

**29.900 Euro**

2. PM cabinet

Netlab.1 incl. Software

# d-lab.1 starter

scanner



calculation

Netlab.1  
software  
Scanner

**Total**

**31.900 Euro**

Netlab.1 incl. Software

# d-lab.1 basic 1



sorter 6"  
capacity upgrade 900 prints / h

calculation

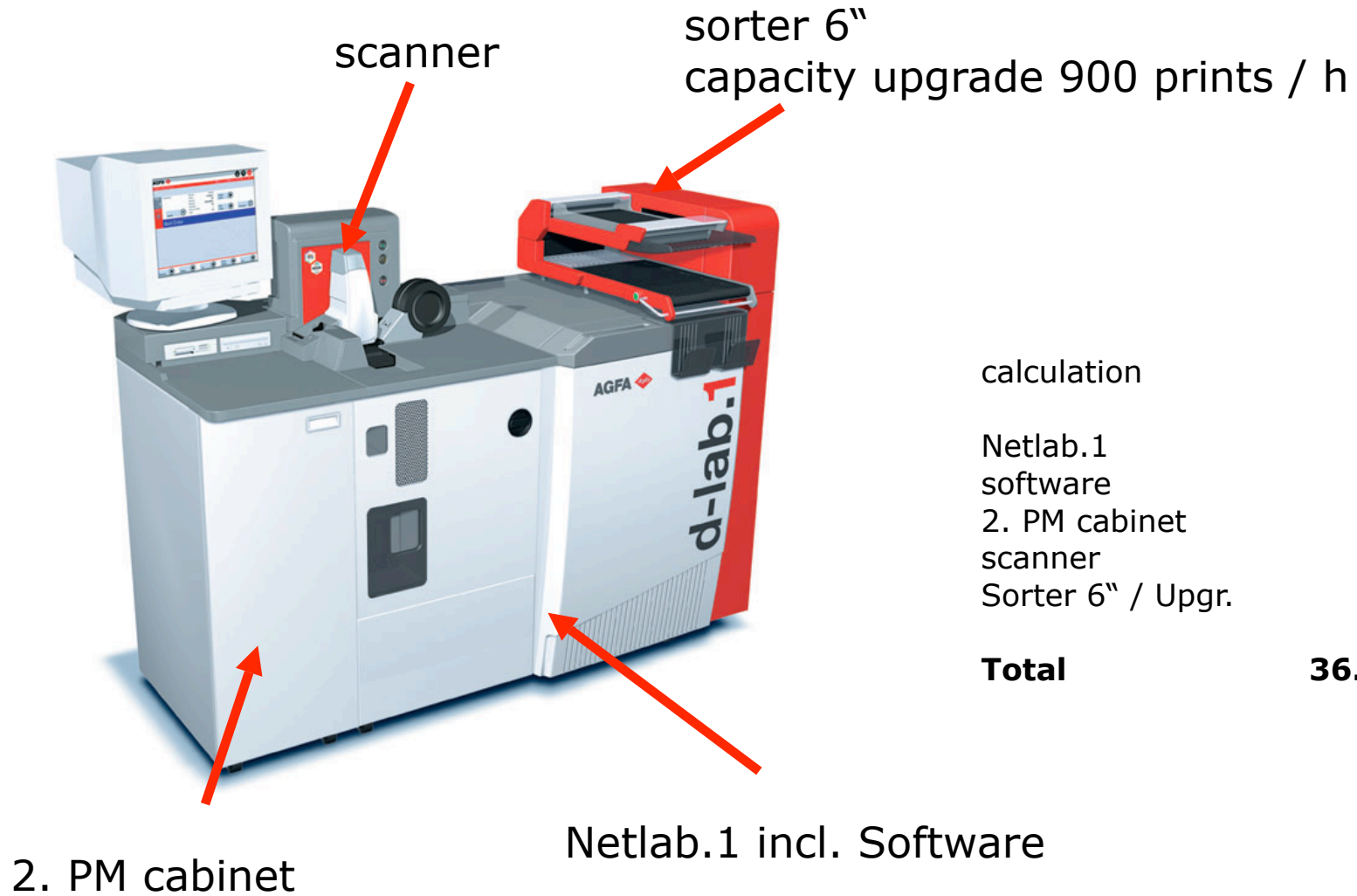
Netlab.1  
software  
scanner  
Sorter 6" / Upgr.

**Total**

**34.900 Euro**

Netlab.1 incl. Software

# d-lab.1 basic 2



calculation

Netlab.1  
software  
2. PM cabinet  
scanner  
Sorter 6" / Upgr.

**Total**

**36.900 Euro**

# d-lab.1 allrounder

Sorter 6"

Incl. Capacity upgrade  
900 prints / h

scanner



calculation

Netlab.1  
software  
FP  
2. PM cabinet  
scanner  
Sorter 6" / Upgr.

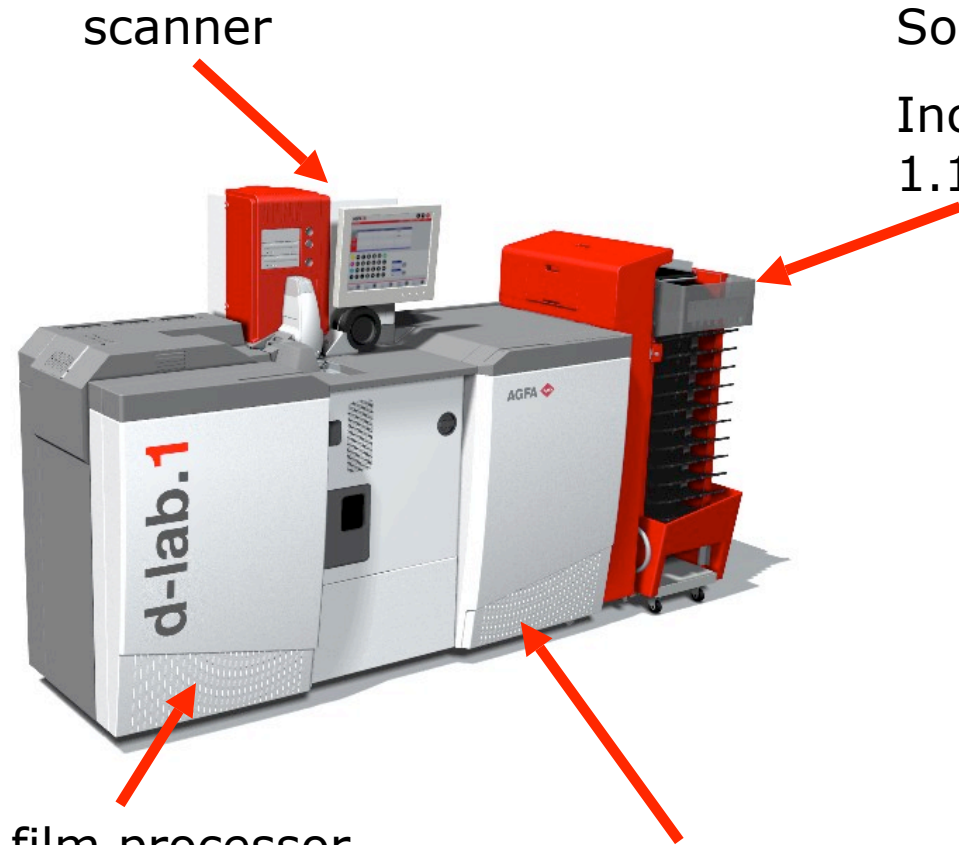
**Total**

**39.900 Euro**

film processor  
incl. 2. PM cabinet

Netlab.1  
incl. software

# d-lab.1 allrounder plus



scanner

Sorter 8"

Incl. Capacity upgrade  
1.100 prints / h

d-lab.1

AGFA

film processor

incl. 2. PM cabinet

Netlab.1

incl. software

calculation

Netlab.1  
software  
FP  
2. PM cabinet  
scanner  
Sorter 6" / Upgr.  
Sorter 8" / Upgr.

**Total**

**40.900 Euro**



**All the prices are**

- Without Installation**
- Ex warehouse ( Germany )**
- Excluded VAT**