

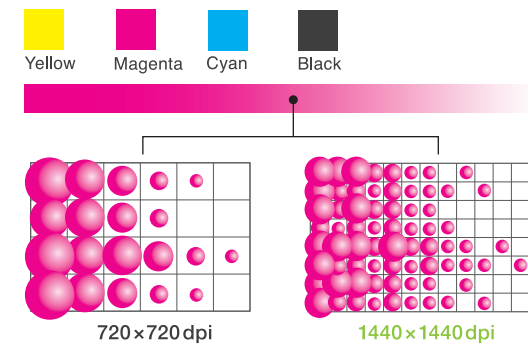
# Enhanced quality

Using the technology Noritsu has developed over the years as a leader in silver halide printing, the QSS Green II delivers a level of quality that exceeds all expectations.

## High quality & High resolution

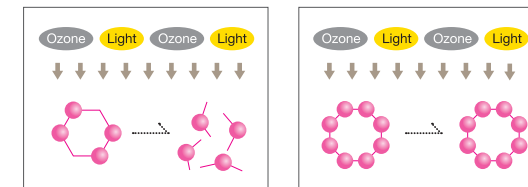
### Beautiful sharp prints with multiple dot gradation dye ink system

The QSS Green II uses a high-grade dye ink system that accurately portrays fine details due to its multiple dot gradation technology. The high quality ink, combined with the excellent absorbing quality of the paper, enables the QSS Green II to produce outstanding print quality.



### High grade ink that produces long lasting colors

Prints made with conventional dye ink tend to fade quickly. However, the ink used in the QSS Green II has an improved molecular structure so it is able to withstand light and ozone. This is why QSS Green II prints boast excellent lightfastness and long lasting colors.



**Molecular structure of convention dye ink**  
Parts of the molecular structure are weak. Results in deterioration and fading.

**Molecular structure of QSS Green II dye ink**  
The dye ink used in the QSS Green II has been improved to withstand deterioration, ensuring your prints will be enjoyed for generations to come.

## Raw file printing

### High quality prints from raw image files



Adobe's DNG conversion technology is incorporated into the EZ Controller along with Noritsu's AccuSmart image processing technology. This means you can easily make high quality prints from raw image files without using separate raw file conversion software.

## Optimize the image with EZ Controller

### EZ Controller (Sold separately)

In addition to serving the important role of system operation software, EZ Controller also has a wealth of advanced image correction functions to correct sharpness, contrast, noise, backlight, red-eye, and under/over exposure, etc.

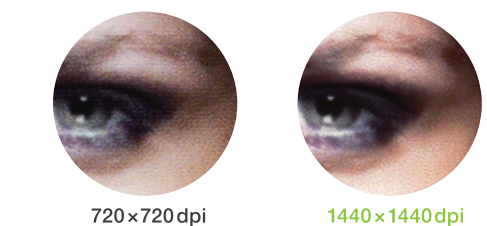
## Two profiles to choose from

There are two profiles available as a standard feature for the QSS Green II – One that emulates the look of silver halide prints, and one that uses the full inkjet gamut to produce more vivid colors. The profile can be easily changed anytime to meet individual needs.

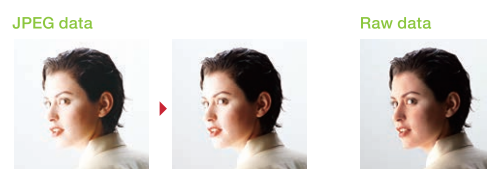


### The QSS Green II can make impressive 1440x1440dpi high-resolution prints

1440x1440dpi high resolution prints are less grainy and have smoother gradations than standard prints. Furthermore, this improvement in terms of graininess also has the effect of producing a better portrayal of contrast, texture and depth.

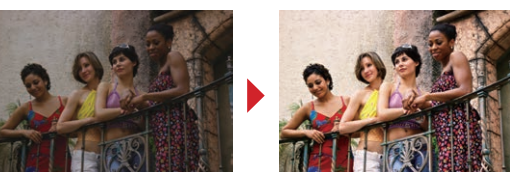


You can register different resolutions (the standard 720x720dpi or the high resolution (1440x1440) in different print channels in the EZ Controller. This enables you to easily change the resolution by simply changing print channels.



A large portion of the pixel data in the original JPEG image has highlight areas that are too light. When the image is corrected, the overall light in the image is reduced, but the pixels representing the highlight areas that were too light are unsalvageable.

All gradations are used, producing an image that is balanced well. There are very few pixels with shadows that are too dark and highlights that are too light.



| Specifications            |  |                                   |  |  |   |   |   |
|---------------------------|--|-----------------------------------|--|--|---|---|---|
| Printing system           | Piezoelectric inkjet system  |                                   |  |  |   |   |   |
| Print resolution          | <b>720x720dpi</b> 6 gradations per dot (5 dot sizes + no dot (White)) / <b>1440x1440dpi</b> 4 gradations per dot (3 dot sizes + no dot (White))  |                                   |  |  |   |   |   |
| Print size                | Roll paper<br>Paper widths: 89, 102, 127, 152, 203, 254, 279, 305mm (3.5", 4", 5", 6", 8", 10", 11", 12")<br>Paper advance lengths: When the widths are 89 and 102mm (3.5", 4") : 88.9 (3.5") to 457.2mm (18")<br>When the width is 127mm (5") : 88.9 (3.5") to 840.0mm (33")<br>When the widths are 152, 203, 254, 279 and 305mm (6", 8", 10", 11", 12") : 88.9 (3.5") to 914.4mm (36") |                                   |  |  |   |   |   |
|                           | Sheet paper<br>Paper widths: 203 (8") to 330mm (13")<br>Paper advance lengths*: 178 (7") to 625mm (24.6")  |                                   |  |  |   |   |   |
| Maximum print size        | Roll paper: 305 x 914.4mm (12" x 36") Sheet paper: 330 x 635mm (13" x 25")   |                                   |  |  |   |   |   |
| Paper types <sup>1)</sup> | Roll paper<br>Noritsu proprietary inkjet photo paper (Glossy/Semi-glossy)<br>Paper widths: 89, 102, 127, 152, 203, 254, 279, 305mm (3.5", 4", 5", 6", 8", 10", 11", 12") Paper roll length : 100m (328feet)  |                                   |  |  |   |   |   |
|                           | Print size*2   | Single-sided sheet paper (Glossy) | Single-sided sheet paper (Semi-glossy) | Double-sided sheet paper (Thin, Semi-glossy, HG) | Double-sided sheet paper (Thick, Semi-glossy, HG) | Double-sided sheet paper (Thick, Folded, Semi-glossy, HG) | Single-sided sheet paper (Photo book cover) |
|                           | 210x297mm (8.3"x11.7")   | Supported                         | Supported                              | Supported  | Supported   |   |   |
|                           | 203x254mm (8"x10")   | Supported                         | Supported                              |  |   |   |   |
|                           | 203x203mm (8"x8")  |                                   |  | Supported  |   |   |   |
|                           | 254x203mm (10"x8")   |                                   |  | Supported  |   |   |   |
|                           | 279x216mm (11"x8.5")   |                                   |  | Supported  | Supported   |   |   |
|                           | 305x305mm (12"x12")  |                                   |  | Supported  |   |   |   |
|                           | 254x178mm (10"x7")   |                                   |  |  |   | Supported   |   |
|                           | 254x432mm (10"x17")  |                                   |  |  |   |   | Supported                                   |
| 254x610mm (10"x24")       |  |                                   |  |  |   | Supported   |   |
| 305x625mm (12"x24.6")     |  |                                   |  |  |   | Supported   |   |
| Ink                       | 4 colors of dye ink: Y (Yellow), M (Magenta), C (Cyan), BK (Black) Volume: 500ml per color   |                                   |  |  |   |   |   |
| Dimensions                | See "External view" below  |                                   |  |  |   |   |   |
| Weight                    | Printer with the 4-order print sorter unit: Approx. 230kg (507.1 lbs) (excluding options, paper and ink cartridges)<br>Printer with the 12-order print sorter unit: Approx. 240kg (529.1 lbs) (excluding options, paper and ink cartridges)  |                                   |  |  |   |   |   |
| Power specifications      | AC 100-120V / 200-240V 1P2W  |                                   |  |  |   |   |   |
| Rated power capacity      | 1440VA or less   |                                   |  |  |   |   |   |

<sup>1)</sup> Paper types are subject to change without notice.

<sup>2)</sup> Indicates the size of the print as it comes out of the printer. Each sheet paper size is 10mm longer (in the advance length direction) before it is printed.

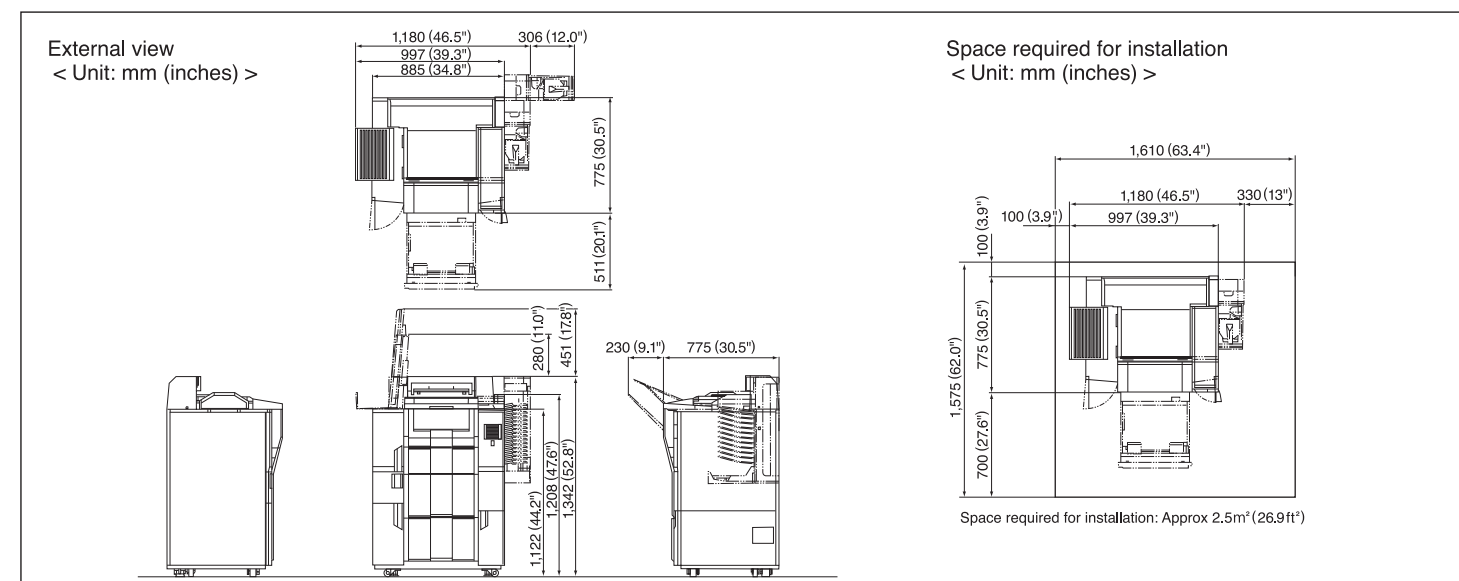
| Print size (Width x Advance length) | Print capacity for roll paper (prints/hour) <sup>1)*2</sup> |   |
|-------------------------------------|---|---|
|                                     | Print resolution : 720x720dpi Prints/hour (Approx.)         | Print resolution : 1440x1440dpi Prints/hour (Approx.) |
| 127x89mm (5"x3.5")                  | 1180  | 404   |
| 152x102mm (6"x4")                   | 950   | 320   |
| 89x127mm (3.5"x5")                  | 1031  | 350   |
| 102x152mm (4"x6")                   | 825   | 275   |
| 102x203mm (4"x8")                   | 636   | 208   |
| 127x178mm (5"x7")                   | 639   | 209   |
| 203x102mm (8"x 4")                  | 633   | 213   |
| 203x254mm (8"x10")                  | 280   | 89  |
| 203x305mm (8"x12")                  | 236   | 74  |
| 254x203mm (10"x8")                  | 305   | 97  |
| 254x305mm (10"x12")                 | 209   | 65  |
| 305x203mm (12"x8")                  | 274   | 86  |
| 305x254mm (12"x10")                 | 223   | 69  |
| 279x356mm (11"x14")                 | 170   | 53  |
| 305x457mm (12"x18")                 | 127   | 39  |
| 305x914mm (12"x36")                 | 55  | 19  |

| Print size (Width x Advance length) | Print capacity for sheet paper (prints/hour) <sup>1)*3</sup> |   |
|-------------------------------------|--|---|
|                                     | Print resolution : 720x720dpi Prints/hour (Approx.)          | Print resolution : 1440x1440dpi Prints/hour (Approx.) |
| 210x297mm (A4/8.3"x11.7")           | 129  | 48  |
| 203x203mm (8"x8")                   | 161  | 61  |
| 203x254mm (8"x10")                  | 143  | 53  |
| 254x178mm (10"x7")                  | 156  | 58  |
| 254x203mm (10"x8")                  | 146  | 54  |
| 279x216mm (Letter/11"x8.5")         | 132  | 49  |
| 305x305mm (12"x12")                 | 106  | 38  |

<sup>1)</sup> Using Noritsu proprietary inkjet paper (Calculated according to our criteria. The capacity you achieve may be different.)

<sup>2)</sup> The capacities listed for 152mm (6") and smaller print sizes represent the capacity when two paper rolls of the same width and same surface are loaded in a two-lane magazine.

<sup>3)</sup> The above figures signify single-sided print capacity.



## NK Works Co., Ltd.

The specifications, information, and appearance of the machine herein are subject to change without notice.

Our products have been manufactured under an ISO 9001-certified quality assurance system.

|   |  |  |  |   |   |   |
|---|--|--|--|---|---|---|
| 579-1 UMEHARA, WAKAYAMA-SHI, 640-8550, JAPAN<br>PHONE:(81)73-454-0345 FACSIMILE:(81)73-454-0301<br>http://www.noritsu.co.jp | <b>COUNTRY</b><br>Australia<br>Brazil<br>Canada<br>China<br>Hong Kong<br>India<br>Malaysia | <b>OFFICE</b><br>Noritsu Koki Australia Pty. Ltd.<br>Noritsu Do Brasil Ltda.<br>Noritsu Canada Ltd.<br>Noritsu (Shanghai) P. E. M. Co., Ltd.<br>Noritsu (Far East) Ltd.<br>Noritsu India Private Ltd.<br>Noritsu Koki Malaysia Sdn. Bhd. | <b>PHONE NO.</b><br>(61) 2-9317-2141<br>(55) 11-3779-0606<br>(1) 905-567-8982<br>(86) 21-5868-3916<br>(852) 2873-4788<br>(91) 11-45757375<br>(60) 3-78762733 | <b>COUNTRY</b><br>Mexico<br>The Philippines<br>South Korea<br>Singapore<br>Taiwan<br>U. A. E.<br>U. S. A. | <b>OFFICE</b><br>Noritsu Mexico S.A. De C.V.<br>Noritsu Philippines, Inc.<br>Noritsu Korea Ltd.<br>Noritsu Singapore Pte. Ltd.<br>Noritsu Taiwan Co., Ltd.<br>Noritsu Near East Branch<br>Noritsu America Corporation | <b>PHONE NO.</b><br>(52) 55-2626-6710<br>(63) 2-812-8443<br>(82) 2-569-2701<br>(65) 6778-8333<br>(886) 2-2508-1908<br>(971) 4-8837556<br>(1) 714-521-9040 |
|---|--|--|--|---|---|---|

NORITSU is a trademark of Noritsu Koki Co., Ltd.  
QSS & AccuSmart are trademarks of NK Works Co., Ltd.

All other product and company names herein may be trademarks of their respective owners.

## A new page in the QSS story



# Enhanced value

With the QSS Green II's wide variety of print services, you can provide new ways for people to enjoy their photos.

## Paper Advantage

### A wide variety of paper

With more paper to choose from, the QSS Green II increases the range of value-added products you can offer. Single-sided prints, duplex prints, photo books and many other unique value-added products are all possible with this versatile minilab.

#### Metallic prints



Metallic/Pearlescent prints

#### Sticker prints



Poster, POP etc.

#### Duplex prints



Photo books



Greeting cards



Photo calendars



Business cards

Photo Studio

\*1 Supports paper with thicknesses in the range of 222 to 288 (0.222 to 0.288mm)  
\*2 Print quality and/or mechanical failure related to the use of non-Genuine Noritsu Paper may not be covered by Noritsu warranty and /or your local dealer service program/s.

## Print Size Advantage

### Enlargements / Panoramas

The QSS Green II can make enlargements in sizes of 10"x 12", 12"x 18", and many other sizes, including panorama prints all the way up to 12"x 36". This enables you to provide personalized photo products such as poster prints, locker prints, and just about any custom print size you can think of.

#### Maximum print size

Roll Paper  
**305×914mm**  
**(12"×36")**

Sheet Paper  
**330×635mm**  
**(13"×25")**

Prints made on sheet paper that exceeds 305mm (12") in width will have borders on both sides in the width direction.



305mm (12")

914mm (36")



305×457mm (12"×18")



Panorama print

# Enhanced productivity

With its high capacity and labor-saving features, the QSS Green II has what photo retailers need.

## High Performance

### High capacity enabling a steady turnover

Print capacity is the key to maintaining smooth and steady profits. The QSS Green II enables you to quickly fulfill urgent orders of any size without sacrificing its top-level print quality.

**6"×4"**  
(152×102mm) approx. **950** prints/hour

**10"×8"**  
(254×203mm) approx. **305** prints/hour

**12"×10"**  
(305×254mm) approx. **223** prints/hour

When outputting at 720x720dpi



### Use less space to sell more with this compact minilab

The QSS Green II can be installed against the wall in 2 directions and its space-saving design makes it easy to install anywhere. Maximum sales from minimum floor space. That's what the QSS Green II is about.

Footprint **0.69m<sup>2</sup> (7.43sq.feet)**

## Roll Paper

### Dual magazine system supporting a countless variety of print sizes

This dual magazine system, which is the first in the industry to support 2-lane magazines, enables you to load up to 4 paper rolls (Widths: 89 to 152mm / 3.5" to 6") and provide a seemingly infinite variety of print sizes.



Paper rolls with different paper widths



Paper rolls with different paper surfaces

## Sheet Paper

### Supports sheet paper as well as roll paper

The QSS Green II can produce prints from both roll paper and sheet paper. Sheet paper gives you the ability to produce high quality duplex prints, which open the door to a whole new realm of exciting value-added print possibilities.



## Automatic Order Sorting

### Two print sorters to choose from

You can choose the 4-order print sorter or the 12-order print sorter.



### LED lights to signify interrupted orders

The EZ Controller Software has always had the unique ability to interrupt orders in process to give preference to urgent orders. Now, with the 12-order print sorter, LED lights are used to signify which tray has the urgent order and which trays have the order that has been interrupted.

## Economical / Eco-Friendly

### Easy to use, easy on your wallet, and easy on the environment

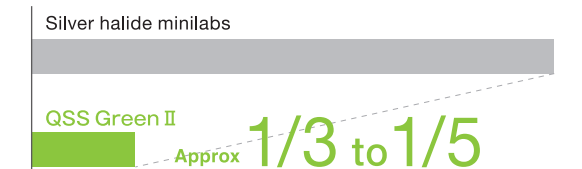
There are no photofinishing chemicals involved with dry systems. This brings you a reduction in time and costs because you do not have to worry about maintaining specified temperatures, handling and disposing solution, or any other related troublesome tasks. With the exception of paper, the only consumable replacement needed for this environmentally-friendly minilab is the ink cartridge. This function can easily be done by anyone.



Easy ink cartridge replacement

### Energy-efficient

The QSS Green II can help you cut your electricity bill drastically. It is estimated to use only about 1/3 to 1/5 the amount of electricity that silver halide minilabs use. This reduction in power consumption makes it both economically-friendly and ecologically-friendly.



Silver halide minilabs

QSS Green II  
Approx. **1/3 to 1/5**

\*Compared to Noritsu silver halide minilabs. Exact amount varies depending on the model.