

QSS-32SD SERIES

QSS-3201SD Digital QSS-3202SD Digital QSS-3203SD Digital



NORITSU



QSS-3201 900

*Capacity from 135 negative film (24 exp.) and digital media (2.5 megapixels)

914mm (36 inches)

305mm
(12 inches)



Jumbo Panorama Prints

Jumbo Panoramas and many other exciting print services

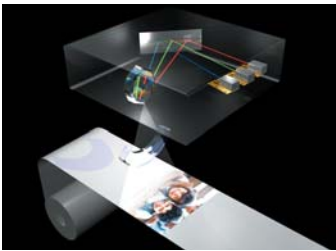
The QSS-32SD Digital series supports an array of print sizes, so you can make enlargements and value-added prints in a variety of sizes. For example, you can produce calendars and posters in the 305 x 457mm (12 x 18 inches) size, and POP displays and life-size panoramas in the 305 x 914mm (12 x 36 inches) size. Many other services are also available, such as the tiling print service that enables you to divide a large image into multiple sections, and then print these sections and put them together to make a photo that exceeds the printer's maximum print size.



Tiling (Optional software required)

High quality laser engine

QSS-32 SD Digital minilabs have a high quality laser engine that produces sharp silver halide prints of 300dpi.



LED light source for scanner

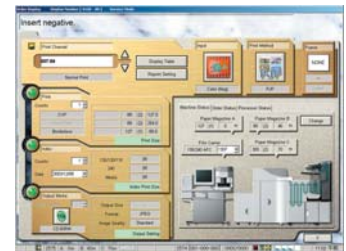
An LED light source is used for the film scanner to ensure high resolution scanning with minimal maintenance.



Efficiency-enhancing features

[Easy operation]

No complicated procedures are required to operate these minilabs. The user-friendly GUI enables you to quickly provide whatever digital service you choose by simply clicking the appropriate icon. Scanning, making corrections, printing and all other operations are a breeze with the QSS-32SD Digital series.



GUI

[Easy maintenance]

The QSS-32SD Digital minilabs feature automatic washing of the upper guides and easy access to the internal parts, which makes it easy to provide maintenance.



[Triple magazine system]

Factory option

The standard dual magazine system enables you to use different paper sizes without changing magazines, and the triple magazine system (option) enables you to set an additional paper size and further increase the variety of print sizes that can be made without changing magazines.



Triple magazine system

Performance digital minilabs that provide a wealth of value-added services

By taking minilabs from the popular QSS-32 Digital series and making revisions in the hardware, we were able to bring you the new QSS-32SD Digital series, which achieves further advancements in cost-effectiveness. The exceptional value provided by these state-of-the-art digital minilabs makes them the perfect solution for a wide range of customers.

QSS-32SD Digital
1,280 prints/hr

QSS-3202SD Digital
1,280 prints/hr

QSS-3203SD Digital
1,600 prints/hr

Reduction of labor requirements

Automatic correction of dust/scratches on the base layer of film **DIGITAL ICE™**

DIGITAL ICE automatically discovers and corrects dust and scratches on the base layer of film, optimizing and restoring each image into beautiful, blemish-free prints. This convenient feature greatly increases efficiency.



- There are some instances when DIGITAL ICE cannot make a satisfactory correction, if the extent of the dust or scratches is too great.
- DIGITAL ICE is automatically disabled when scanning Black & White film.
- DIGITAL ICE correction may not be sufficiently effective when scanning certain types of film.

DIGITAL ICE is a trademark of Eastman Kodak.

Automatic correction of dust/scratches on the emulsion layer of film **Digital Masking Software**

This software developed by Noritsu Koki automatically corrects dust and scratches on the emulsion layer of film, where DIGITAL ICE is unable to correct. This comes in very handy when even small dust and scratches have a tendency to stand out, such as is the case when making enlargements from positive film.



Original Image

DIGITAL ICE

Digital Masking

Digital technology applied to optimize image correction

A wide variety of special correction services

Special correction software Option

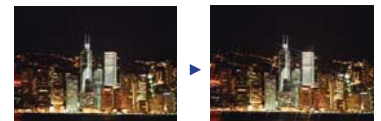
[Red eye correction]

When taking pictures of people using a flash, the pupils of the eyes often appear to be red. This correction function automatically detects such "red eye" images so they can be corrected with automatic or manual operations.



[Cross filter software]

Cross marks are placed in areas of shining or reflecting light, adding a nice accent to the picture.



[Soft filter software]

There are two types of soft filters. Foggy : Makes images that look like they were taken in the fog. Duto : Produces a mild soft effect.



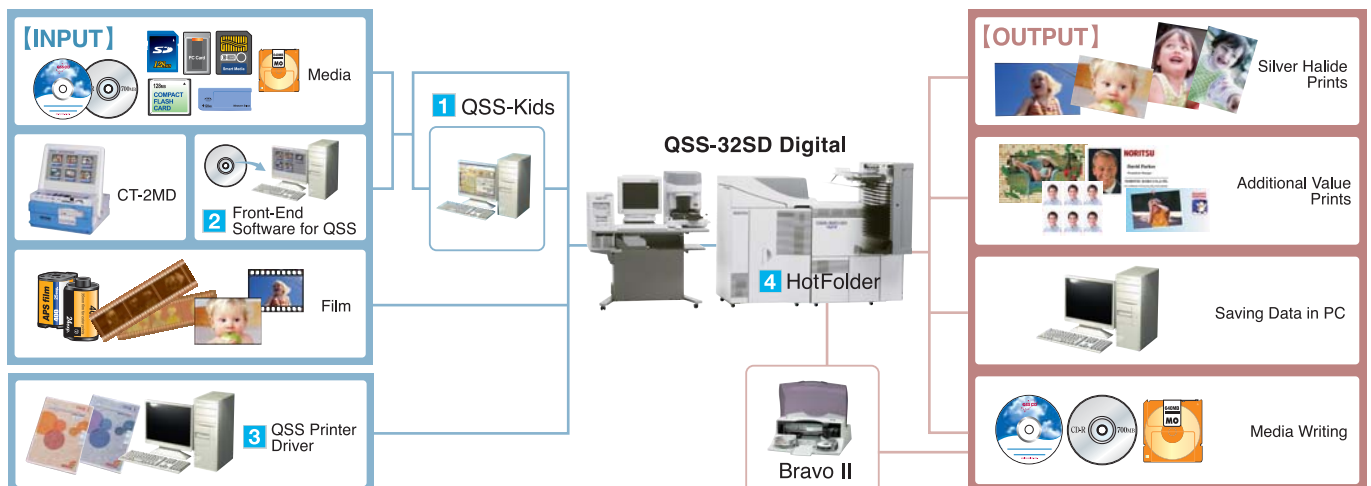
[Tone curve correction software]

You can use the tone curve to make precise tone adjustment for each color channel (R, G, B) individually.



Other optional correction software includes spot correction software, scene correction software, and lens aberration correction software (PRO).

Using a network to achieve a higher level of efficiency



1 QSS Kids (Option)

This is network software that helps increase efficiency by enabling you to use external computers to perform time-consuming front-end operations.

2 Front-End Software for QSS (Option)

This software enables you to turn a normal computer into a user-friendly consumer terminal for inputting orders that are printed with the QSS.

3 QSS Printer Driver (Option)

This software enables you to connect a computer to the QSS and make silver halide prints from application software files such as Photoshop, PowerPoint, etc.

4 HotFolder (Option)

This is software that is installed in the QSS system computer to enhance the digital workflow.

		QSS-3201 / 3202 / 3203SD Digital
Film types		Color negative and positive (including mounted) , B&W negative (Chromogenic B&W), Sepia negative
Film size		110, 135F, 135H, 135P, 135FP, 135FPS, IX240,120 (6x4.5, 6x6, 6x7, 6x8, 6x9)
Compatible input media	Standard	FD, CD-ROM, CD-R, CD-RW
	Optional	MO, ZIP, DVD-RAM, DVD-ROM, CompactFlash, Microdrive, SmartMedia, PC Card, SD Card, Mini SD Card (Adapter required), MMC, Memory Stick, Memory Stick Duo (Adapter required), Memory Stick Pro, Memory Stick Pro Duo (Adapter required), xD-Picture Card, USB Flash Memory
Compatible output media	Standard	FD
	Optional	CD-R, CD-RW, MO, ZIP, DVD-RAM, CompactFlash, Microdrive, SmartMedia, PC Card, SD Card, Mini SD Card (Adapter required), MMC, Memory Stick, Memory Stick Duo (Adapter required), Memory Stick Pro, Memory Stick Pro Duo (Adapter required), xD-Picture Card, USB Flash Memory
Exposure system		Laser scanning exposure by paper movement Laser class : Class1 (EN60825-1)
Print resolution		300dpi
Print sizes	Paper width	82.5, 89, 102, 114, 117, 120, 127, 130, 152, 165, 178, 203, 210, 216, 240, 254, 279, 305 (mm)
	Paper advance length	82.5 to 457mm (for widths from 82.5 to 178mm) / 82.5 to 914mm (for widths from 203 to 305mm)
Paper supply		Dual magazine system, Triple magazine system (Factory Option)
Order classification		Can choose either 17 or 14 orders
Dimensions		See " External view " below
Power capacity		200~415V 5.4~6.0KVA
Weight	Scanner	Approx. 123.6kg
	Printer-Processor	Approx. 529.7kg (3201, 3202) Approx. 536.7kg (3203)

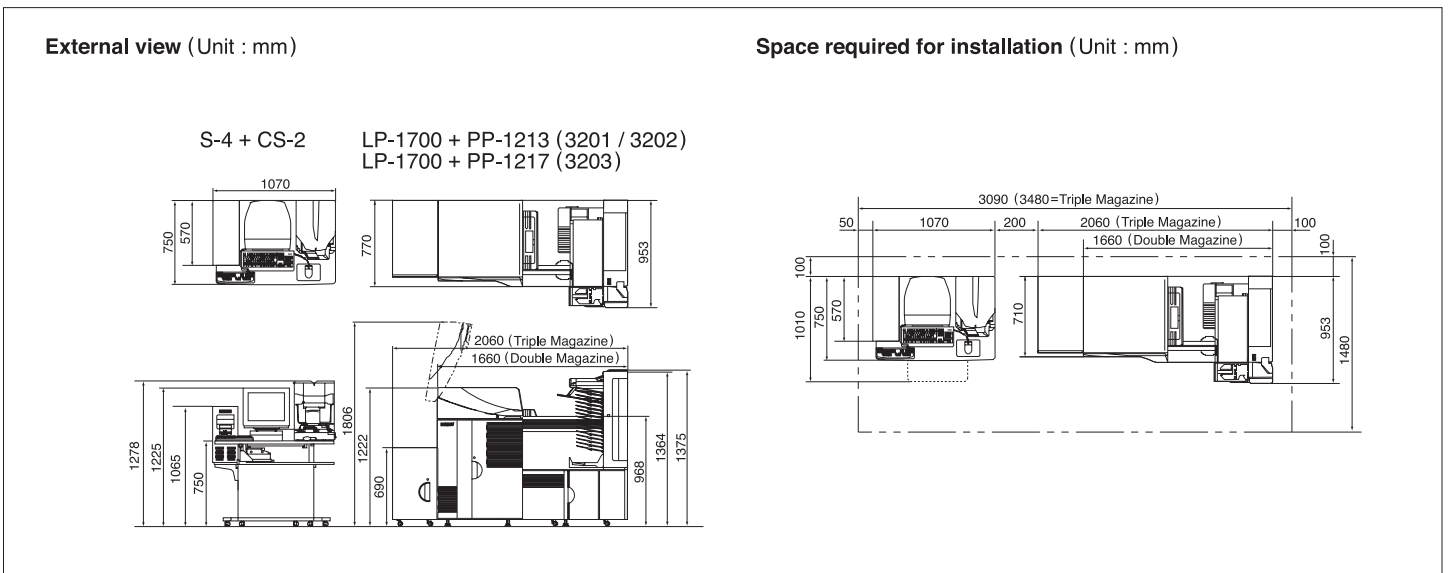
Estimated processing capacity (prints / hr)*1

		3201SD	3202SD	3203SD
135 negative film (24 exp.)	W 89 x 127mm	Approx.900	Approx. 960	Approx.1210
	W127 x 89mm	Approx.900	Approx.1280	Approx.1600
	W102 x 152mm	Approx.800	Approx. 820	Approx.1040
	W203 x 254mm	Approx.190	Approx. 280	Approx. 340
	W254 x 305mm	Approx.160	Approx. 200	Approx. 200
IX240 negative film (25 exp.)	W305 x 457mm	Approx.110	Approx. 160	Approx. 180
	89mm paper width	Approx.670	Approx. 830	Approx.1040
Digital camera*2	W 89 x 127mm	Approx.900	Approx. 960	Approx.1210
	W127 x 89mm	Approx.900	Approx.1280	Approx.1600
	W102 x 152mm	Approx.800	Approx. 820	Approx.1030
	W203 x 254mm	Approx.190	Approx. 280	Approx. 340
	W254 x 305mm	Approx.160	Approx. 240	Approx. 290
W305 x 457mm	Approx.110	Approx. 160	Approx. 200	

*1 : The processing capacity may be lower depending in the print settings and the options installed.

*2 : 32MB SmartMedia, 1712 x 1368 pixels per image, JPEG image size: 490KB to 560KB
All of the capacities (including capacities from film) listed herein do not include index prints.
Calculated according to our criteria. The actual capacity you achieve may be different.

QSS-3201/3202/3203SD Digital



NORITSU KOKI CO., LTD.

The specifications, information, and the appearance of the machines in this brochure are subject to change without notice.



Our products have been manufactured under an ISO 9001-certified quality assurance system.

579-1 UMEHARA, WAKAYAMA-SHI, 640-8550, JAPAN
PHONE:(81)73-454-0345 FACSIMILE:(81)73-454-0301
<http://www.noritsu.co.jp>

COUNTRY	OFFICE	PHONE NO.
Australia	Noritsu Koki Australia Pty. Ltd.	(61) 2-9317-2141
Belgium	Noritsu Belgium	(32) 2-558-0070
Brazil	Noritsu Do Brasil Ltda.	(55) 11-3779-0607
Canada	Noritsu Canada Ltd.	(1) 905-567-8982
The Czech Rep.	Noritsu (CR) spol. sr. o.	(420) 241-040901
China	Noritsu (Shanghai) E. E. M. Co., Ltd.	(86) 21-59169898
China	Noritsu (Shanghai) P. E. M. Co., Ltd.	(86) 21-52080600
France	Noritsu France	(33) 169-11-92-00
Greece	Noritsu Hellas Ltd.	(30) 210-6019506
Germany	Noritsu (Deutschland) GmbH	(49) 2154-9157-0
Hong Kong	Noritsu (Far East) Ltd.	(852) 2873-4788
India	Noritsu India Branch	(91) 11-51427245

COUNTRY	OFFICE	PHONE NO.
Italy	Noritsu Italia S. r. l.	(39) 011-9183312
Mexico	Noritsu Mexico S.A. De C.V.	(52) 5-601-0429
The Philippines	Noritsu Philippines, Inc.	(63) 2-812-8443
Poland	Noritsu (Poland) Sp. z.o.o.	(48) 22-465353
South Korea	Noritsu Seoul Branch	(82) 2-569-2701
Russia	Noritsu (R) Ltd.	(7) 095-933-6446
Singapore	Noritsu Singapore Pte. Ltd.	(65) 6778-8333
Taiwan	Noritsu Taiwan Co., Ltd.	(886) 2-2508-1908
U. A. E.	Noritsu Near East branch	(971) 4-8837556
U. K.	Noritsu (UK) Ltd.	(44) 1908-371100
U. S. A.	Noritsu America Corporation	(1) 714-521-9040

NORITSU and QSS are trademarks of Noritsu Koki Co.,Ltd.
"Memory Stick" is a trademark of Sony Corporation.

All other product and company names herein may be trademarks of their respective owners.



Printed on recycled paper. 2005.11 TAC 01